



BD83A14EFV-M Evaluation Board

REFLED004-EVK-001

<High Voltage Safety Precautions>

◇ Read all safety precautions before use

Please note that this document covers only the BD83A14EFV-M evaluation board (REFLED004-EVK-001) and its functions. For additional information, please refer to the datasheet.

To ensure safe operation, please carefully read all precautions before handling the evaluation board



Depending on the configuration of the board and voltages used,

Potentially lethal voltages may be generated.

Therefore, please make sure to read and observe all safety precautions described in the red box below.

Before Use

- [1] Verify that the parts/components are not damaged or missing (i.e. due to the drops).
- [2] Check that there are no conductive foreign objects on the board.
- [3] Be careful when performing soldering on the module and/or evaluation board to ensure that solder splash does not occur.
- [4] Check that there is no condensation or water droplets on the circuit board.

During Use

- [5] Be careful to not allow conductive objects to come into contact with the board.
- [6] **Brief accidental contact or even bringing your hand close to the board may result in discharge and lead to severe injury or death.**

Therefore, DO NOT touch the board with your bare hands or bring them too close to the board.

In addition, as mentioned above please exercise extreme caution when using conductive tools such as tweezers and screwdrivers.

- [7] If used under conditions beyond its rated voltage, it may cause defects such as short-circuit or, depending on the circumstances, explosion or other permanent damages.
- [8] Be sure to wear insulated gloves when handling is required during operation.

After Use

- [9] The ROHM Evaluation Board contains the circuits which store the high voltage. Since it stores the charges even after the connected power circuits are cut, please discharge the electricity after using it, and please deal with it after confirming such electric discharge.
- [10] Protect against electric shocks by wearing insulated gloves when handling.

This evaluation board is intended for use only in research and development facilities and should be handled **only by qualified personnel familiar with all safety and operating procedures.**

We recommend carrying out operation in a safe environment that includes the use of high voltage signage at all entrances, safety interlocks, and protective glasses.

LED Driver for Automotive Panel Backlight

4ch White LED Driver Built-in Current Driver Boost DC/DC Converter for Automotive BD83A14EFV-M Evaluation Board

REFLED004-EVK-001

Introduction

This user's guide will provide the necessary steps to operate the Evaluation Board of ROHM's BD83A14EFV-M LED Driver.

This document includes the external parts, operating procedures and application data.

Description

This Evaluation Board was developed for ROHM's LED Driver BD83A14EFV-M. BD83A14EFV-M is a white LED driver for LCD backlight. It has 4ch Current Driver for LED Drive, and it is suitable for high illumination LED drive. It is suitable for middle size LCD panel drive because LED pin maximum voltage is 50 V.

The dimming is controlled by the PWM signal and can be set up to 20,000: 1@100 Hz.

It also supports analog dimming and can accommodate even higher brightness ranges by combining with PWM dimming.

DC/DC converters can be controlled for boost applications, and the input operating voltage range is 4.5 V to 48V.

Application

Automotive backlight application for CID, cluster panel, car navigation, HUD, or car audio system.

Evaluation board operating condition (default setting)

Table 1. Evaluation board operating condition (default setting)

Parameter	Min	Typ	Max	Unit
Power supply voltage *1	7	13.5	18	V
LEDs in series	6	-	12	pcs
LEDs in parallel	-	4	-	ch
Output voltage *2	19	-	43	V
Output current (per channel)	-	120	-	mA
DC/DC oscillation frequency	-	400 *3	-	kHz
Over voltage limit	-	47	-	V
Over current limit	-	6.7	-	A

*1 This indicates the voltage near the VCC pin. Be careful of voltage drop by the impedance of power line.

*2 Output voltage is determined by the Vf value of the connected LED and the numbers of series. Since this evaluation board has a boost-configuration, output voltage should be higher than input voltage. Also, output voltage should be lower than OVP voltage.

*3 The default frequency is set to 400kHz so that it is higher than the EMC standard (LW: 150kHz to 300kHz) even if variations and SSCG functions are considered.

Evaluation board

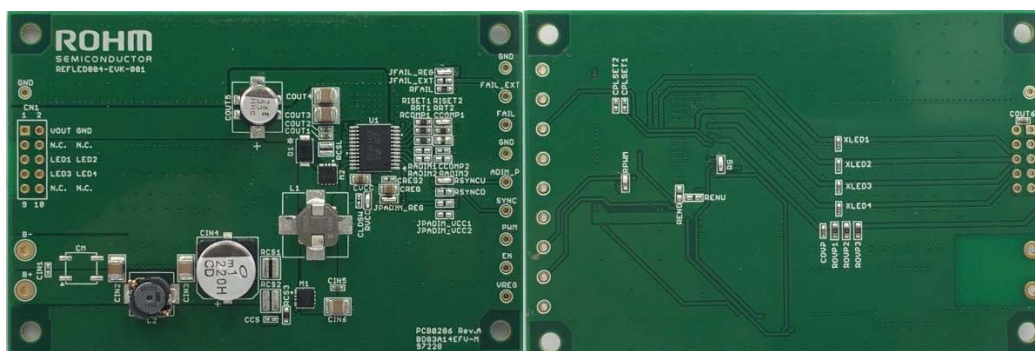


Figure 1. Top view

Figure 2. Bottom view

Evaluation board setup

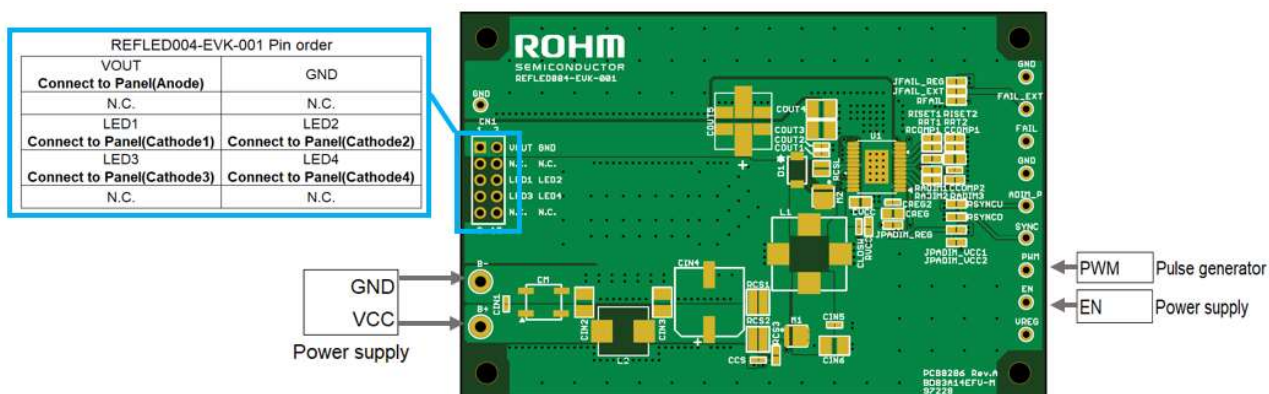


Figure 3. Evaluation board setup

Operating procedure

1. Connect panel or LEDs to evaluation board. (Anode to VOUT-pin. Cathode to LEDx-pin.)
2. Connect power supply to +B-pin and –B-pin of the evaluation board.
3. Connect power supply to EN-pin. It must be less than 7V.
4. Connect pulse generator to PWM-pin. It should be 100Hz to 25kHz and the minimum pulse width must be longer than 0.5μs.
5. Turn on the power supply for +B-pin.
6. Turn on the power supply for EN-pin.
7. Turn on the pulse generator for PWM-pin.

Operation mode settings

The table below describes the settings for SYNC terminals.

Table 2. Mode settings

Terminal	Setting	Function
SYNC	GND or OPEN	Fixed Frequency Mode Determined by RRT
	REG	Spread Spectrum Mode (SSCG) of the Frequency Determined by RRT
	Pulse Input	Synchronizing to the frequency applied in SYNC pin

For unused channels, pull down the LED pin to GND with 10kΩ.

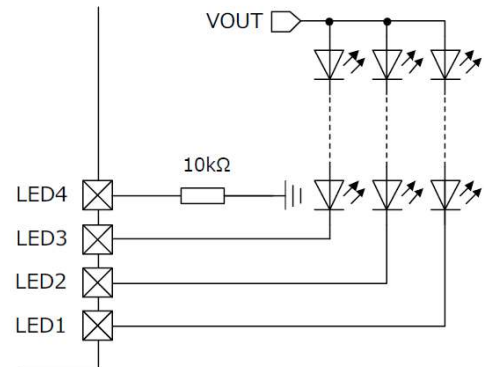


Figure 4. Setting LED4 to Unused

The ISET terminal voltage can be adjusted according to the voltage input to the ADIM_P terminal.

The LED current can be calculated from the following equation.

$$I_{LED} = \frac{V_{ISET}}{R_{ISET}} \times \frac{10}{9} \times 10^6 \quad [\text{mA}]$$

$$V_{ISET} = 1.089 \text{ [V]} \quad (\text{when } 90\% \leq D_{ADIM_P} \leq 100\%)$$

$$V_{ISET} = 1.089 \times \frac{10}{9} \times D_{ADIM_P} \text{ [V]} \quad (\text{when } 18\% < D_{ADIM_P} < 90\%)$$

I_{LED} is the output current per 1ch (LED current)

(Recommended operating condition : 20 mA to 120 mA)

R_{ISET} is the LED current setting resistor

(Recommended operating condition : 8.8kΩ to 53kΩ)

V_{ADIM} is the ADIM_P pin input OnDuty

(Recommended operating condition : 18% to 100%)

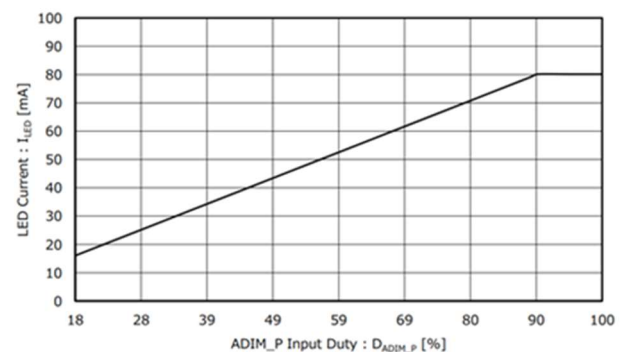


Figure 5. I_{LED} vs D_{ADIM_P} ($R_{ISET} = 15.1 \text{ k}\Omega$)

Pin configuration

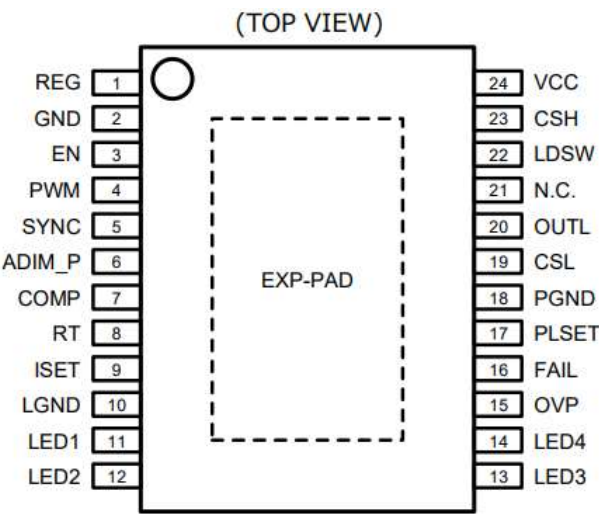


Figure 6. Pin configuration

Evaluation board schematic

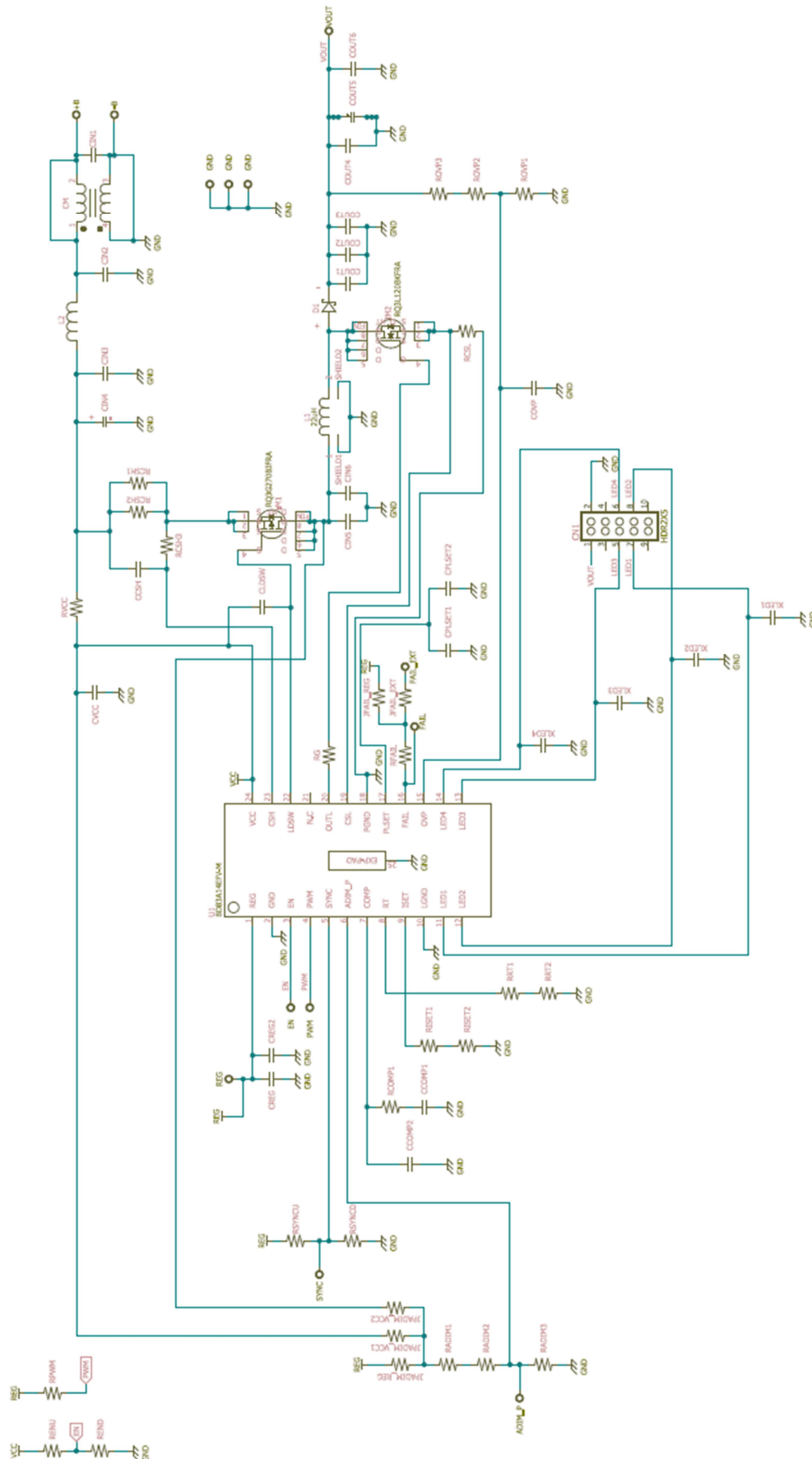


Figure 7. Evaluation board schematic

Parts list

Table 3. Parts list

No	Package	Parameters	Part name(series)	Type	Manufacturer
CIN1	-	Open	-	-	-
CIN2	3225	10μF,X7S,50V	GCM32EC71H106KA01	Ceramic	Murata
CIN3	3225	10μF,X7S,50V	GCM32EC71H106KA01	Ceramic	Murata
CIN4	φ10 x L10mm	220μF/50V	UCD1H221MNL1GS	Electrolytic	Nichicon
CIN5	1005	0.1μF,X7S,50V	GCM155R71H104KE02	Ceramic	Murata
CIN6	3225	10μF,X7S,50V	GCM32EC71H106KA01	Ceramic	Murata
CVCC	2012	1μF,X7S,50V	GCM21BR71H105KA01	Ceramic	Murata
CM	-	-	-	-	-
RCSH1	1632	12mΩ	LTR18 series	Resistor	Rohm
RCSH2	-	Open	-	-	-
RCSH3	1608	100Ω	MCR03 series	Resistor	Rohm
CCSH	-	Open	-	-	-
CLDSW	-	Open	-	-	-
RCOMP1	1608	200Ω	MCR03 series	Resistor	Rohm
CCOMP1	1005	0.47μF,X7S,10V	GCM155C71A474KE36	Ceramic	Murata
CCOMP2	-	Open	-	-	-
RRT1	1608	13kΩ	MCR03 series	Resistor	Rohm
RRT2	1608	12kΩ	MCR03 series	Resistor	Rohm
RFAIL	1608	100kΩ	MCR03 series	Resistor	Rohm
CREG	2012	2.2μF/16V	GCM21BR71C205KA49	Ceramic	Murata
CREG2	-	Open	-	-	-
M1	HSMT8AG	-40V/-27A	RQ3G270BJFRA	MOSFET	Rohm
M2	HSMT8AG	60V/12A	RQ3L120BKFRA	MOSFET	Rohm
L1	7.5mmx7.0mmx5.4mm	22μH	SPM7054VT-220M-D	Inductor	TDK
L2	7.4mmx7.0mmx4.5mm	4.7μH	CLF7045NIT-4R7N-D	Inductor	TDK
D1	SOD-128_PMDTM	60V/5A	RB088LAM-60TF	SBD	Rohm
COUT1	1005	0.01μF,X7S,50V	GCM155R71H103KA55	Ceramic	Murata
COUT2	1005	0.1μF,X7S,50V	GCM155R71H104KE02	Ceramic	Murata
COUT3	3225	10μF,X7S,50V	GCM32EC71H106KA01	Ceramic	Murata
COUT4	3225	10μF,X7S,50V	GCM32EC71H106KA01	Ceramic	Murata
COUT5	Φ6.3 x L7,7mm	33μF/63V	HHXC500ARA330MF80G	Hybrid	Nippon Chemi-Con
COUT6	1005	0.1μF,X7S,50V	GCM155R71H104KE02	Ceramic	Murata
ROVP1	1608	10kΩ	MCR03 series	Resistor	Rohm
ROVP2	1608	360kΩ	MCR03 series	Resistor	Rohm
ROVP3	1608	10kΩ	MCR03 series	Resistor	Rohm
RISET1	1608	10kΩ	MCR03 series	Resistor	Rohm
RISET2	1608	0Ω	-	Resistor	-

Parts list - continued

Table 3. Parts list - continued

No	Package	Parameters	Part name(series)	Type	Manufacturer
CPLSET1	1005	1500pF,X7S,50V	GCM155R71H222KA37	Ceramic	Murata
CPLSET2	-	Open	-	-	-
RCSL	1220	56mΩ	LTR10L series	Resistor	Rohm
COVP	1005	1000pF,X7S,50V	GCM155R71H102KA37	Ceramic	Murata
XLED1	1005	470pF,X7S,50V	GCM1555C1H471JA16	Ceramic	Murata
XLED2	1005	470pF,X7S,50V	GCM1555C1H471JA16	Ceramic	Murata
XLED3	1005	470pF,X7S,50V	GCM1555C1H471JA16	Ceramic	Murata
XLED4	1005	470pF,X7S,50V	GCM1555C1H471JA16	Ceramic	Murata
RADIM1	-	Open	-	-	-
RADIM2	-	Open	-	-	-
RADIM3	-	Open	-	-	-
REND	-	Open	-	-	-
RENU	-	Open	-	-	-
RSYNCD	-	Open	-	-	-
RVCC	1608	0Ω	-	Resistor	-
RG	1608	0Ω	-	Resistor	-
RSYNCU	1608	0Ω	-	Resistor	-
RPWM	1608	0Ω	-	Resistor	-
JFAIL_EXT	-	Open	-	-	-
JPADIM_VCC1	-	Open	-	-	-
JPADIM_VCC2	-	Open	-	-	-
JFAIL_REG	1608	0Ω	-	Resistor	-
JPADIM_REG	1608	0Ω	-	Resistor	-
U1	HTSSOP-B24	-	BD83A14EFV-M	LED Dr	Rohm

Board layout

Evaluation board PCB information

Material	FR-4
Board thickness	1.6mm
Copper thickness	1 oz.
Number of layers	4
Board size	90X60mm
Minimum copper width	0.15mm
Minimum air gap	0.15mm
Minimum hole size	0.3mm

The layout of BD83A14EFV-M is shown below.

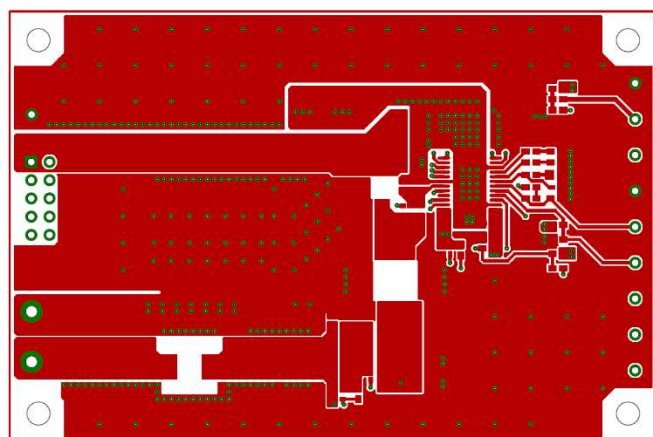


Figure 8. Top layer layout
(Top view)

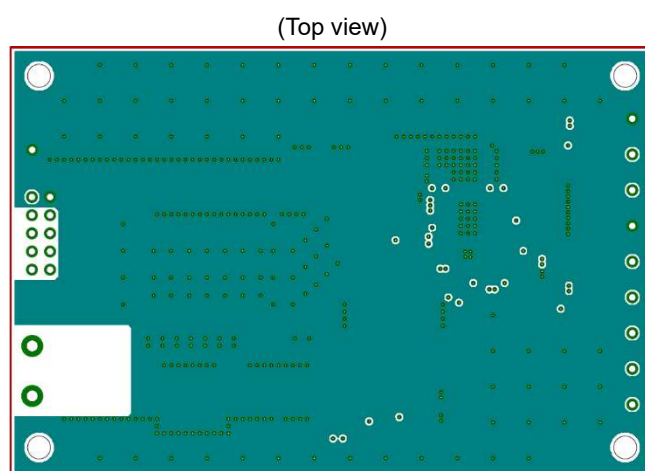


Figure 9. 2nd layer layout
(Top view)

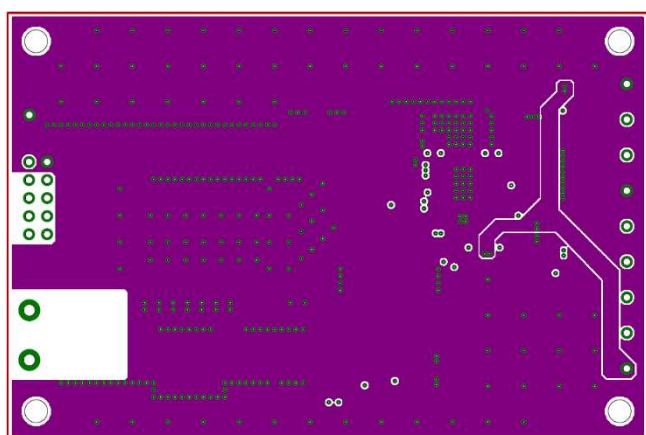


Figure 10. 3rd layer layout
(Top view)

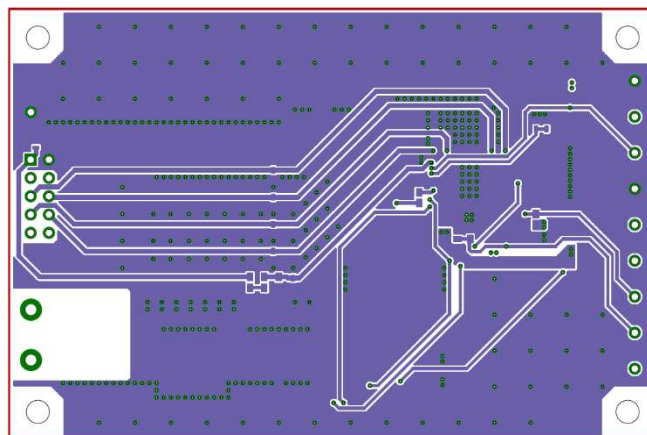


Figure 11. Bottom layer layout
(Top view)

Reference application data

(Ta=25°C, Output voltage=34V, Iout=120mA x 4ch)

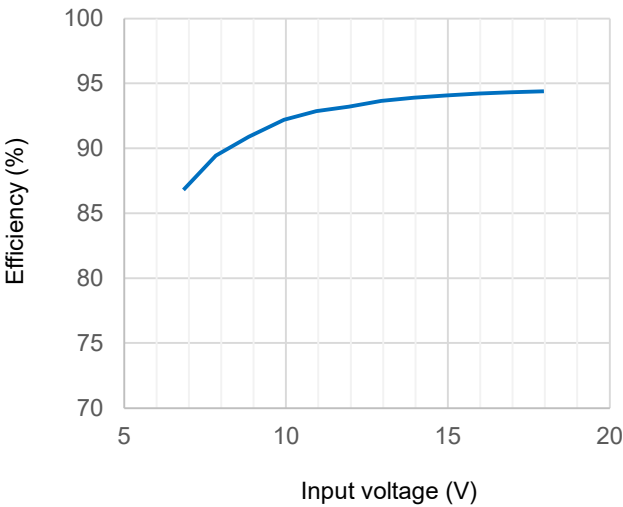


Figure 12. Efficiency vs Input voltage

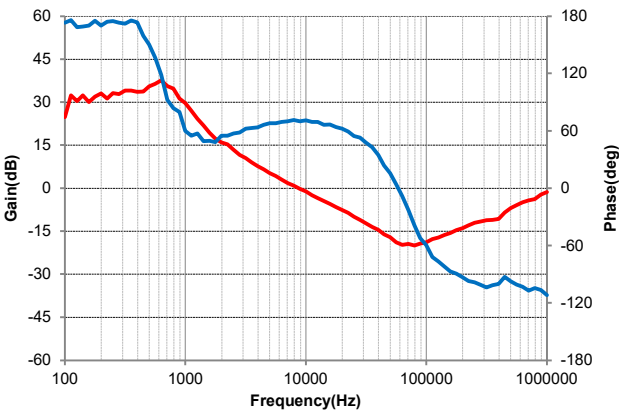


Figure 13. Gain, Phase vs Frequency (VCC=12V)

Revision history

Date	Revision number	Description
06. Dec. 2021	001	Initial release

Notes

- 1) The information contained herein is subject to change without notice.
- 2) Before you use our Products, please contact our sales representative and verify the latest specifications :
- 3) Although ROHM is continuously working to improve product reliability and quality, semiconductors can break down and malfunction due to various factors.
Therefore, in order to prevent personal injury or fire arising from failure, please take safety measures such as complying with the derating characteristics, implementing redundant and fire prevention designs, and utilizing backups and fail-safe procedures. ROHM shall have no responsibility for any damages arising out of the use of our Products beyond the rating specified by ROHM.
- 4) Examples of application circuits, circuit constants and any other information contained herein are provided only to illustrate the standard usage and operations of the Products. The peripheral conditions must be taken into account when designing circuits for mass production.
- 5) The technical information specified herein is intended only to show the typical functions of and examples of application circuits for the Products. ROHM does not grant you, explicitly or implicitly, any license to use or exercise intellectual property or other rights held by ROHM or any other parties. ROHM shall have no responsibility whatsoever for any dispute arising out of the use of such technical information.
- 6) The Products specified in this document are not designed to be radiation tolerant.
- 7) For use of our Products in applications requiring a high degree of reliability (as exemplified below), please contact and consult with a ROHM representative : transportation equipment (i.e. cars, ships, trains), primary communication equipment, traffic lights, fire/crime prevention, safety equipment, medical systems, servers, solar cells, and power transmission systems.
- 8) Do not use our Products in applications requiring extremely high reliability, such as aerospace equipment, nuclear power control systems, and submarine repeaters.
- 9) ROHM shall have no responsibility for any damages or injury arising from non-compliance with the recommended usage conditions and specifications contained herein.
- 10) ROHM has used reasonable care to ensure the accuracy of the information contained in this document. However, ROHM does not warrants that such information is error-free, and ROHM shall have no responsibility for any damages arising from any inaccuracy or misprint of such information.
- 11) Please use the Products in accordance with any applicable environmental laws and regulations, such as the RoHS Directive. For more details, including RoHS compatibility, please contact a ROHM sales office. ROHM shall have no responsibility for any damages or losses resulting non-compliance with any applicable laws or regulations.
- 12) When providing our Products and technologies contained in this document to other countries, you must abide by the procedures and provisions stipulated in all applicable export laws and regulations, including without limitation the US Export Administration Regulations and the Foreign Exchange and Foreign Trade Act.
- 13) This document, in part or in whole, may not be reprinted or reproduced without prior consent of ROHM.



Thank you for your accessing to ROHM product informations.
More detail product informations and catalogs are available, please contact us.

ROHM Customer Support System

<http://www.rohm.com/contact/>