

High Performance Class-D Speaker Amplifier Series

BD5424EFS Evaluation Board Information

BD5424EFS-EVK-001

●General

BD5424EFS is a 20W + 20W stereo class-D power amplifier IC, developed for space-saving and low heat-generation applications such as low-profile TV sets. The IC employs state-of-the-art Bipolar, CMOS, and DMOS (BCD) process technology that eliminates turn-on resistance in the output power stage and internal loss due to line resistances up to an ultimate level. With this technology, the IC has achieved high efficiency of 91% (10W + 10W output with 8Ω load), which is the top class in the industry. The IC, in addition, employs a compact back-surface heat radiation type power package to achieve low power consumption and low heat generation and eliminates necessity of installing an external radiator, up to a total output of 40W. This product satisfies both needs for drastic downsizing, low-profile structures and powerful, high-quality playback of the sound system.

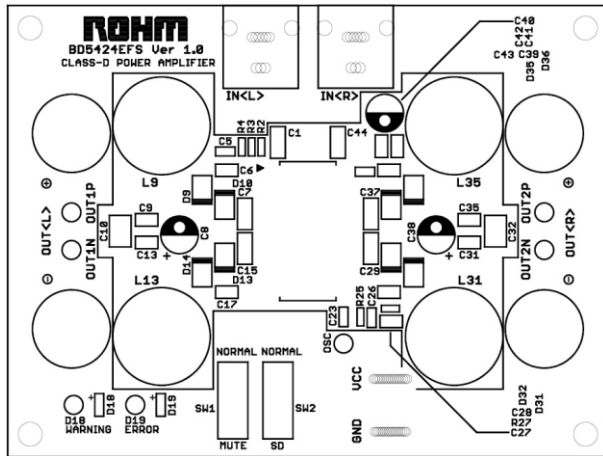
●Index

- General 1
- Index 1
- Conditions 1
- Circuit Diagram..... 2
- PCB layout 3
- Usage 4
- BOM List 5

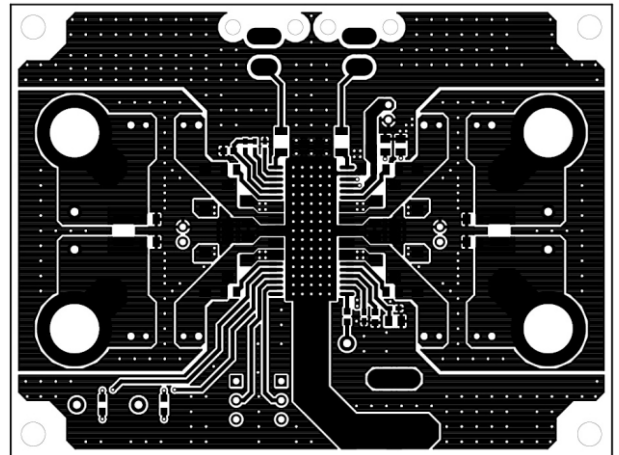
●Conditions

| Item | Symbol | Range | Unit |
|----------------|----------|---------------------|----------|
| Supply Voltage | V_{CC} | +10 ~ +18 | V |
| Input Voltage | V_{IN} | -0.2 ~ $V_{CC}+0.2$ | V |
| Load Impedance | R_L | $3.6 \leq$ | Ω |

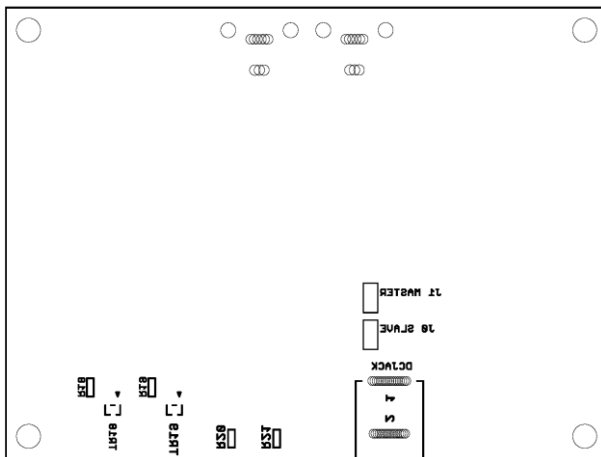
●PCB layout



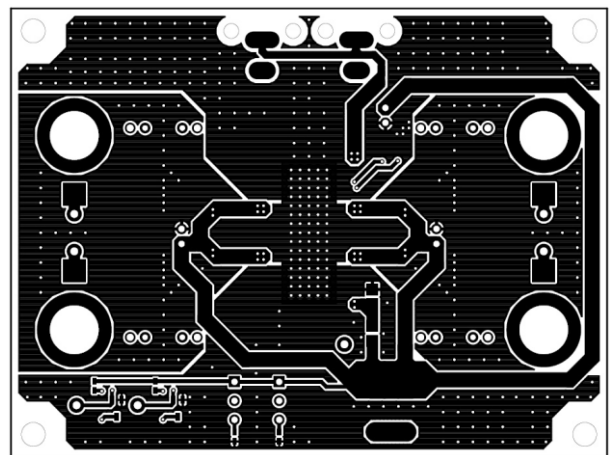
TOP SILKSCREEN – TOP VIEW



TOP LAYER – TOP VIEW

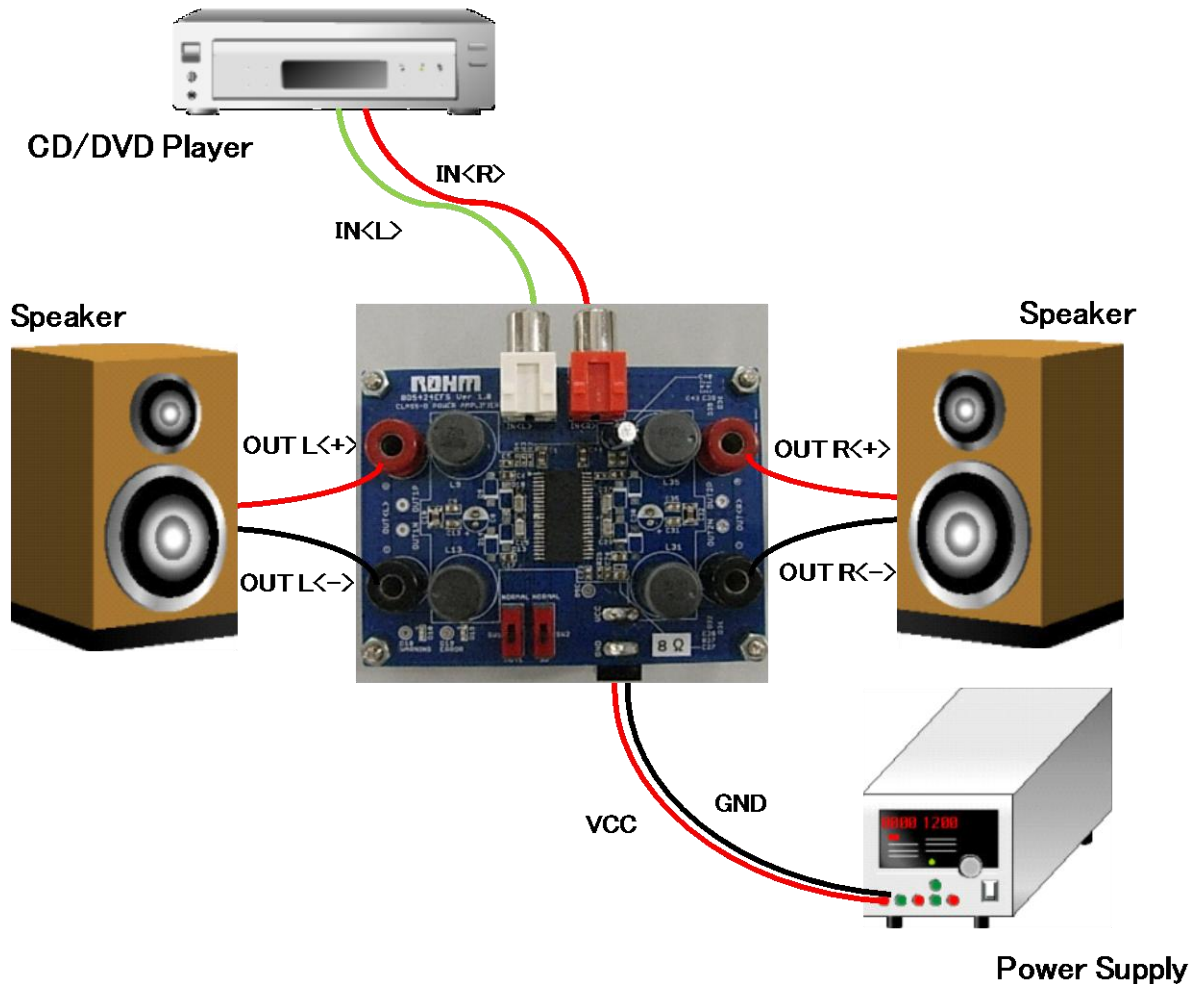


BOTTOM SILKSCREEN – TOP VIEW



BOTTOM LAYER – TOP VIEW

● Usage



- ① Please set the switches SD (Shutdown mode) and MUTE (Mute mode).
- ② Connect Power supply, Speaker, and Audio Source.
- ③ Set Power supply 12V(Typ.).
- ④ Set the switches in order of SD → NORMAL (Normal mode) and MUTE → NORMAL (Sound output mode)
- ⑤ In the end of operation, set the switches in order of NORMAL → MUTE (Mute mode) , NORMAL → SD (Shutdown mode), and set supply voltage OFF.

●BOM List

[RL=8Ω]

| Parts | Parts No. | Value | Company | Product No. | Rated Voltage | Tolerance |
|------------------------|---|---------|---------|---------------|---------------|-----------|
| IC | IC1 | — | ROHM | BD5424EFS | — | — |
| SBD | D9, D10, D13, D14, D31, D32, D35, D36 (Not mount) | — | ROHM | RB162M-40 | 40V | — |
| Inductor | L9, L13, L31, L35 | 22μH | TOKO | A7503AY-220M | - | (±20%) |
| Resister | R2, R3, R4 | 22kΩ | - | 1005 size | 1/16W | F(±1%) |
| | R18, R19 | 2.2kΩ | | 1005 size | | |
| | R20, R21 | 10kΩ | | 1005 size | | |
| | R25 | 22kΩ | | 1005 size | | |
| | R27 | open | | - | | |
| Capacitor | C6, C17, C28, C39 | 1.0uF | - | 2012 size | 50V | B(±10%) |
| | C7, C15, C29, C37 | 0.1uF | | 2012 size | 50V | B(±10%) |
| | C9, C13 C31, C35 | 0.068uF | | 1608 size | 50V | B(±10%) |
| | C10, C32 | 0.33uF | | 2012 size | 50V | B(±10%) |
| | C27 | 3.3μF | | 2012 size | 25V | B(±10%) |
| | C5, C23, C26, C43 | 0.1μF | | 1608 size | 50V | R(±10%) |
| | C42 | 10μF | | 2012 size | 16V | B(±10%) |
| | C41 | 1μF | | 2012 size | 25V | B(±10%) |
| | C1, C44 | 1.0μF | | 1608 size | 25V | B(±10%) |
| Electrolytic Capacitor | C8, C38 | 100uF | | φ8.0mm×11.5mm | 25V | ±20% |
| | C40 | 10uF | | φ5.0mm×11mm | 50V | ±20% |
| LED | D19 | RED | | 1608 size | | — |
| | D18 | YELLOW | | 1608 size | | - |
| MOSFET | Tr18, Tr19 | Nch | ROHM | RSU002N06 | 60V | — |
| PIN Jack | IN<L> | — | | | — | — |
| | IN<R> | — | | | — | — |
| Chip Jack | OUT+ | — | | (Red) | | — |
| | OUT- | — | | (Black) | | — |

Notes

- 1) The information contained herein is subject to change without notice.
- 2) Before you use our Products, please contact our sales representative and verify the latest specifications :
- 3) Although ROHM is continuously working to improve product reliability and quality, semiconductors can break down and malfunction due to various factors.
Therefore, in order to prevent personal injury or fire arising from failure, please take safety measures such as complying with the derating characteristics, implementing redundant and fire prevention designs, and utilizing backups and fail-safe procedures. ROHM shall have no responsibility for any damages arising out of the use of our Products beyond the rating specified by ROHM.
- 4) Examples of application circuits, circuit constants and any other information contained herein are provided only to illustrate the standard usage and operations of the Products. The peripheral conditions must be taken into account when designing circuits for mass production.
- 5) The technical information specified herein is intended only to show the typical functions of and examples of application circuits for the Products. ROHM does not grant you, explicitly or implicitly, any license to use or exercise intellectual property or other rights held by ROHM or any other parties. ROHM shall have no responsibility whatsoever for any dispute arising out of the use of such technical information.
- 6) The Products specified in this document are not designed to be radiation tolerant.
- 7) For use of our Products in applications requiring a high degree of reliability (as exemplified below), please contact and consult with a ROHM representative : transportation equipment (i.e. cars, ships, trains), primary communication equipment, traffic lights, fire/crime prevention, safety equipment, medical systems, servers, solar cells, and power transmission systems.
- 8) Do not use our Products in applications requiring extremely high reliability, such as aerospace equipment, nuclear power control systems, and submarine repeaters.
- 9) ROHM shall have no responsibility for any damages or injury arising from non-compliance with the recommended usage conditions and specifications contained herein.
- 10) ROHM has used reasonable care to ensure the accuracy of the information contained in this document. However, ROHM does not warrants that such information is error-free, and ROHM shall have no responsibility for any damages arising from any inaccuracy or misprint of such information.
- 11) Please use the Products in accordance with any applicable environmental laws and regulations, such as the RoHS Directive. For more details, including RoHS compatibility, please contact a ROHM sales office. ROHM shall have no responsibility for any damages or losses resulting non-compliance with any applicable laws or regulations.
- 12) When providing our Products and technologies contained in this document to other countries, you must abide by the procedures and provisions stipulated in all applicable export laws and regulations, including without limitation the US Export Administration Regulations and the Foreign Exchange and Foreign Trade Act.
- 13) This document, in part or in whole, may not be reprinted or reproduced without prior consent of ROHM.



Thank you for your accessing to ROHM product informations.
More detail product informations and catalogs are available, please contact us.

ROHM Customer Support System

<http://www.rohm.com/contact/>